

NEW YORK
IN

IN-NEWYORKMAG.COM

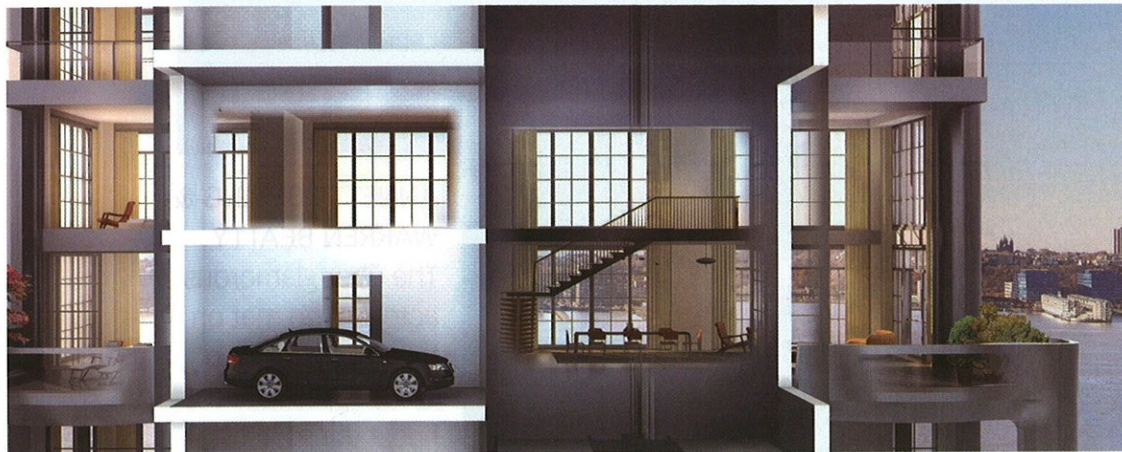
FEBRUARY 2008



IGNITE THE ROMANCE

SHOP LIKE
GWEN AND
OTHER HOT
CELEBS

GET SOLD
ON THE
BIGGEST
AUCTIONS



Drive-Up Pied-à-Terre

With parking spaces at a premium all over Manhattan, one luxury condominium, 200 Eleventh Avenue, has come up with a coveted perk—the En-Suite Sky Garage™. Fourteen of the 16 residences in the 19-story stainless-steel tower, designed by Selldorf Architects, have an adjacent, private 300-square-foot garage accessed by a key-lock elevator that swiftly lifts

home owners and their vehicles from street level to their front door. Condos are 1,300 to 3,500 square feet and have oversized windows, huge terraces and unobstructed Hudson River views. At press time, only a few units, beginning at \$6.25 million, remain and will be ready for occupancy by fall 2008. » **200 Eleventh Avenue, at W. 24th St.;** Sales, Prudential Douglas Elliman, 352-0222

BY SHARYN JACKSON

values