

APRIL 2008 AUTOMOBILEMAG.COM

Automobile

BORN IN THE MOTOR CITY

THE CHALLENGER

FIRST DRIVE **FULL SPECS** KILLER PHOTOS



THE VERY WICKED PONTIAC G8

V-8 and rear-drive help bring the swagger back.

AWD PERFORMANCE: STI, EVO, OR 335xi?

Sun, snow, and a whole lot of dirt. Full report from our West Coast test.

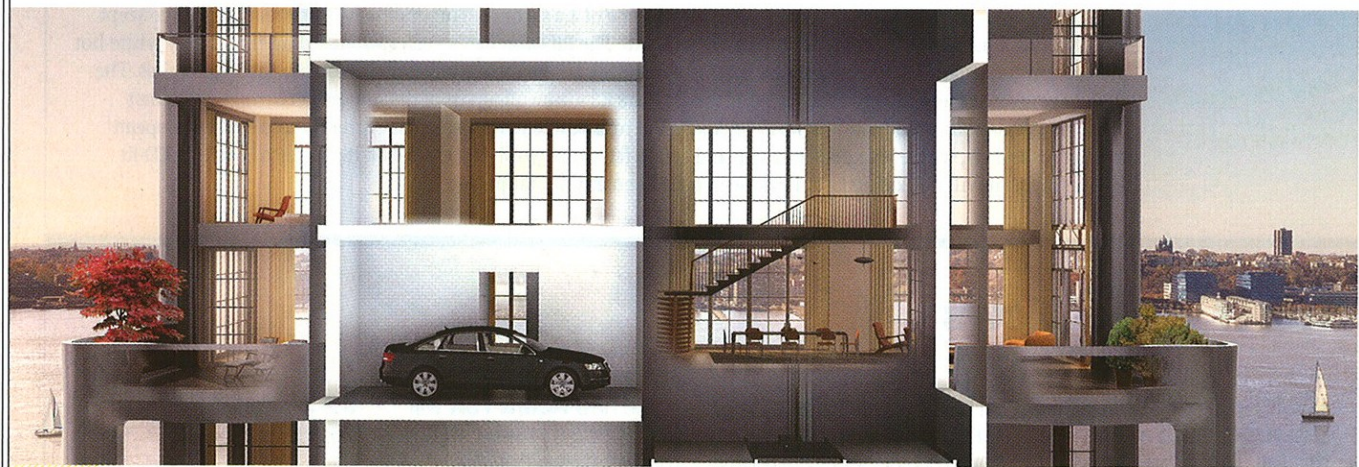
YOU CAN BUY A TANK. LOADED.

Our madman in Prague finds a source for your personal protection needs.

USA \$4.99 Canada \$5.99



A SOURCE INTERLINK MEDIA PUBLICATION



SKY GARAGE RENDERING: HAYES DAVIDSON

Suburbia in the Sky

The one-car attached garage is reborn as an exotic amenity in Manhattan.

A staple of the humble suburban tract house since—well, pretty much since the invention of the suburban tract house—the attached, one-car garage is at last coming to the multimillion-dollar New York City condo market. A new building at 200 Eleventh Avenue is the first to offer what it calls an “en-suite sky garage,” essentially a one-car garage attached to the apartment and accessed by a drive-in elevator. Prices for the garage-equipped units, which also feature floor-to-ceiling windows, tubs hewn from solid granite, and kitchens with teak islands, start at \$6.25 million. Too much? Hey, there’s always Long Island.